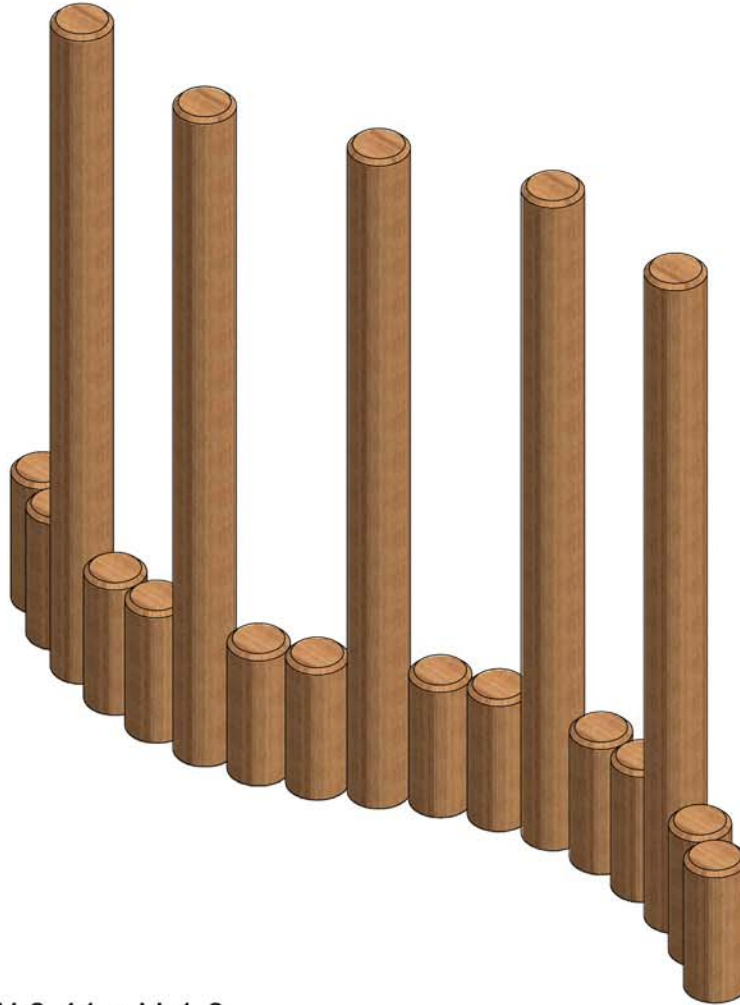


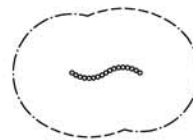
WE NOT ONLY RECOMMEND THAT CHILDREN ARE SUPERVISED AT ALL TIMES BUT ALSO ADVISE THAT SAFER SURFACING BE USED FOR ALL OUR EQUIPMENT



DIMENSIONS: L:1.92 x W:0.41 x H:1.0

TECHNICAL DATA

Minimum Space Required	4.92m x 3.41m
Free Height Of Fall	<0.6m
Topsoil or Turf Surfacing	OK
Safer Surfacing Area	4.92m x 3.41m
Intended Age Range	3+
Supervised Play	Recommended
Equipment Type	Outdoor Low Level
Curriculum	Balance, Agility & Co-ordination
Largest Component	2100mm x 120mm dia
Heaviest Component	14.3 kg
Overall Equipment Weight	145 kg
Special Equipment Required	None
Concrete Qty Required	0.5m3



SCALE PLAN 1:200

AREA OF SAFER SURFACING

Wetpour	17m2
Durascape	20.5m2
GrassSaver 22	14 Tiles
Loose Fill	17m2

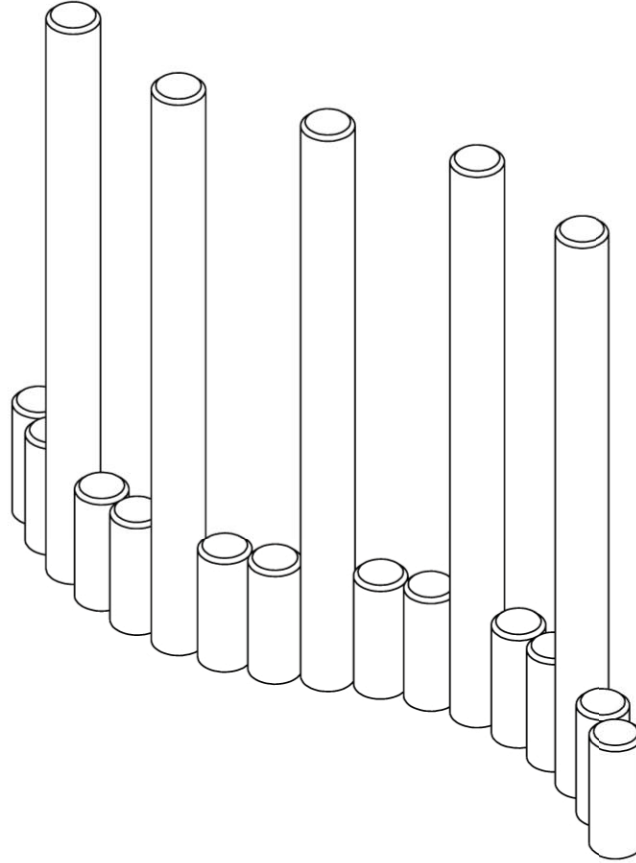


**BS EN:1176
COMPLIANT**



Standard configuration shown. this can be altered to suit site conditions
Any gaps between logs must be less than 8mm


Parts List				
ITEM	QTY	PART No	DESCRIPTION	IMAGE
1	5	FRLT2112_BM	2100mm x 120/125 dia	
2	12	FRLT0912_BP	900mm x 120/125 dia	

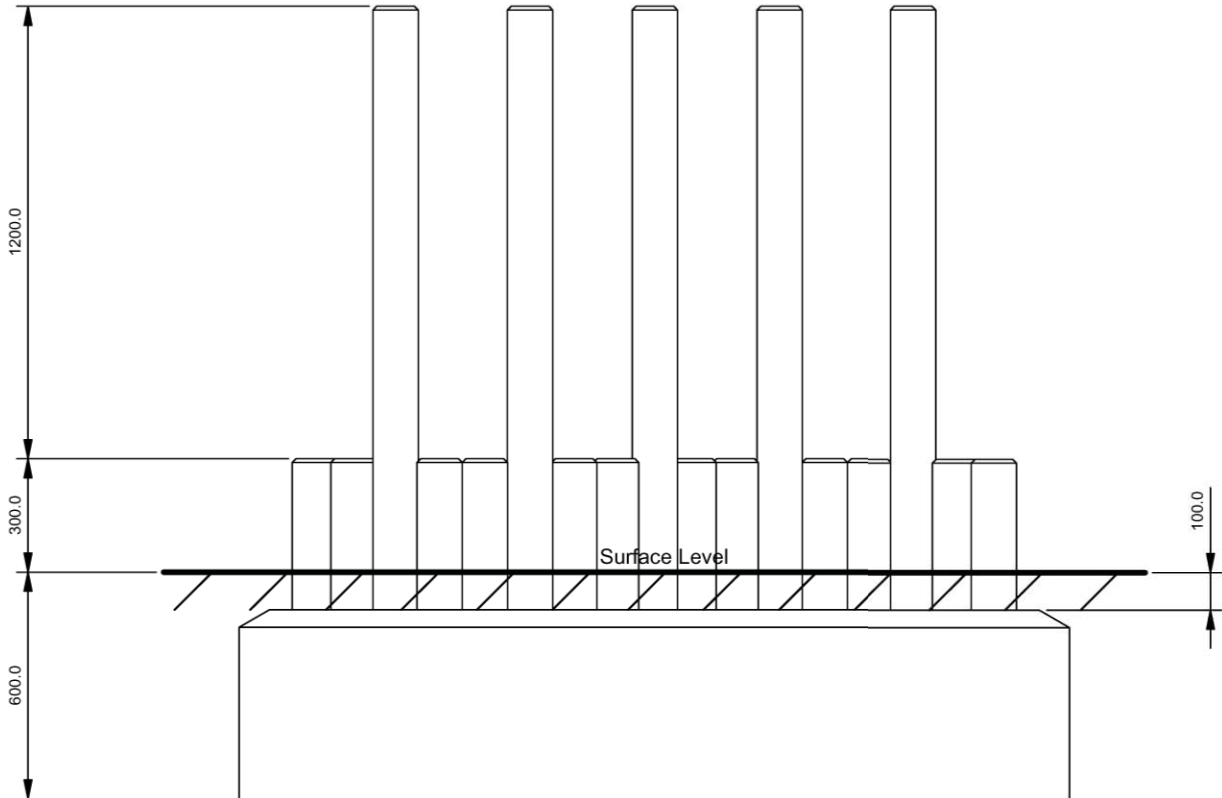
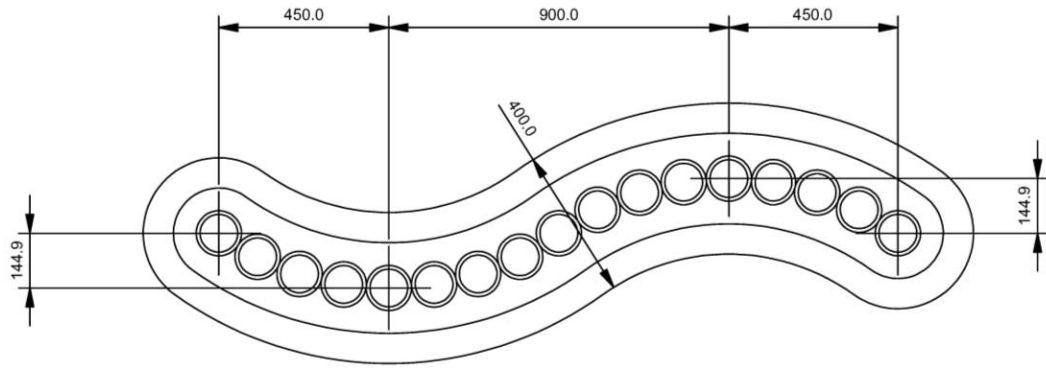



Installation Procedure.

1. Position the logs on the ground in the desired position and mark a line for the foundation trench outside the logs. (sheet 2 shows standard configuration)
2. Excavate the foundation hole/trench as shown on sheet 2. When installing into loose surfaces such as sand, install the unit 100mm lower into the ground to allow for surfacing loss over time.
3. Position the logs into the foundation hole/trench, check the posts are plumb and ideally with no gaps between (Any gaps must be less than 8mm). Add concrete around posts. The top of the concrete should be 100mm below the finished surface level, see drawing sheet 2.
4. Leave the concrete to set for 48 Hours.
5. Sand any rough edges or Surfaces and treat with preservative if necessary.
6. This unit must be maintained in accordance with our inspection and maintenance schedule and BS1176 part 7.



Drawing Number: LWW22-IN-AY				
<u>TOLERANCES</u> General ± 1.0 Hole Diameters ± 0.5 Fixing Centres ± 0.5 Angles ± 0.5	Material: See Drg			
	Finish: Clean	New	09/02/09	A
3rd Angle Projection 	Drawn By: AK	Scale: NTS	Sheet: 1	of: 2
Woodcot Court, 2A Woodcot Gardens, Farnborough, Hampshire GU14 9RD Tel: 01252 515199 Fax: 01252 515858 http://www.fawns.co.uk Email: fawns@fawns.co.uk No part of this document may be copied or used without the express written permission of FAWNS RECREATIONAL SERVICES LTD (c) FRS 2009				



Drawing Number: LWW22-IN-AY				
TOLERANCES General ± 1.0 Hole Diameters ± 0.5 Fixing Centres ± 0.5 Angles ± 0.5	Material: See Drg			
	Finish: Clean	New	09/09/09	A
3rd Angle Projection 	Drawn By: AK	Scale: NTS	Sheet: 2	of: 2
Woodcot Court, 2A Woodcot Gardens, Farnborough, Hampshire GU14 9RD Tel: 01252 515199 Fax: 01252 515858 http://www.fawns.co.uk Email: fawns@fawns.co.uk No part of this document may be copied or used without the express written permission of FAWNS RECREATIONAL SERVICES LTD (c) FRS 2009				