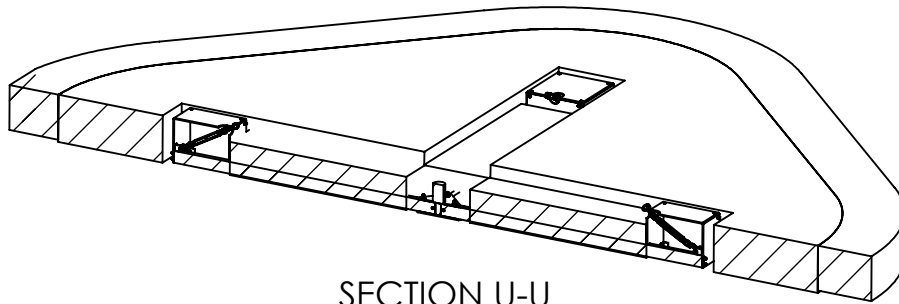


Stage 3

Once the steelwork has been assembled, and is in position in the bottom of the trench double check that everything is level and square.

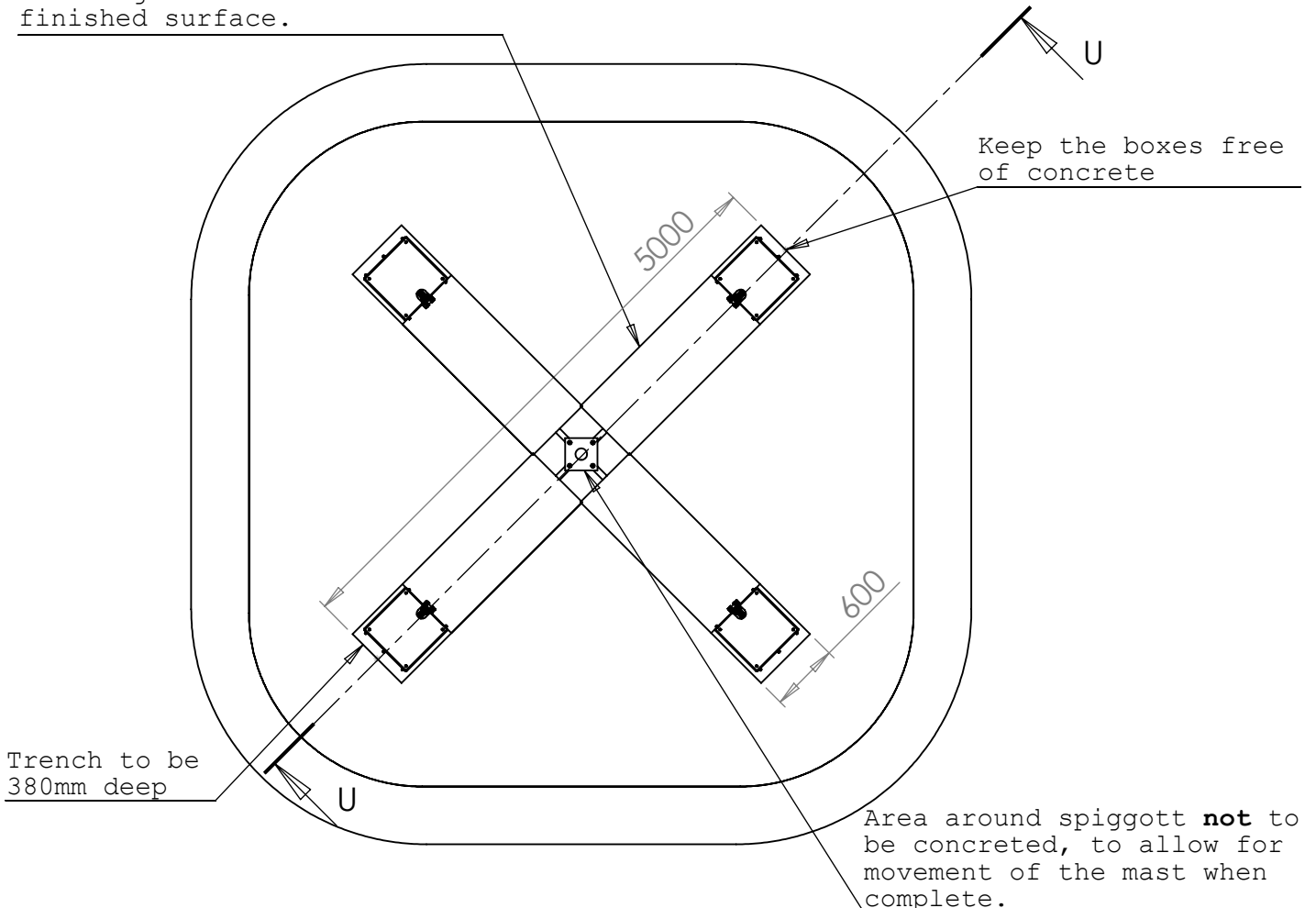
Using an un-reinforced C30 mixture back fill the steelwork with concrete, ensure that the centre of the cross is kept free to allow for installation of the mast.

Leave at least 100mm free of concrete from the finished ground level, this can then be back filled with your requirements to the finished surface material.



SECTION U-U
SCALE 1 : 60

Concrete to a depth of 280mm allowing 100mm of backfill to finished surface.



Maintenance & Inspection

General

The structure should be inspected and maintained in accordance with the recommendations as detailed in EN-1176-Part-7: Guidance on installation, inspection, maintenance and operation for playground equipment.

If any part of the equipment is found to be unsafe during an inspection, and that part cannot be repaired or replaced immediately, the equipment unit or part(s) concerned should be secured against use. This may involve immobilisation or removal from site.

Important note: The frequency of inspection will vary with the type of equipment or materials used and other factors (e.g. heavy use, levels of vandalism, coastal location, air pollution, age of equipment etc...)

Routine Visual Inspection

A routine visual inspection enables the identification of obvious hazards that can result from vandalism, use or weather conditions (e.g. broken parts). A daily routine visual inspection is recommended especially for playground equipment that has heavy use and/or is subject to vandalism and should include the inspection of the following as a minimum:

1. General equipment and surface cleanliness
2. Equipment ground clearances are maintained
3. *Foundations not exposed, loose in the ground or cracked.
4. Parts not missing or damaged
5. Surface finishes not damaged, rusting or deteriorating
6. Connections and bolts are secure and tight
7. Bearings are free running
8. Safety surface (if installed) not compacted, damaged or contaminated

*Within the corner box chambers, foundations and steelwork should not be cracked, loose in the ground or exposed. Inspect the stainless steel mast at finished ground level for cracks or deformation in the single structural support.

Retension the Rope

Periodic checks on tension will help assist in the durability of the product.

After initial tension is complete, the net will stretch approximately 1% over the first two weeks of use. Following this initial period, the net needs to be fully retensioned by releasing the locking nuts and equally re-tightening the turnbuckles.

It is recommended that subsequent checks on tension should be carried out at monthly intervals and adjusted as required.

Single Structural Support

Dynamic items and equipment where stability relies on a single structural support. For Dynamic items of equipment or for equipment where stability relies on a single structural support for stability, it is recommended that they are scheduled for replacement after a maximum use period of 15 years for structural steel. This is particularly important for these structures that are subject to fluctuating loads as fatigue can occur over time, depending on the level of use and abuse.

For further information and technical assistance, please contact the manufacturers at:



Tayplay Ltd

13A Riverview Business Park
Friarton Road
Perth
PH2 8DF
Scotland

Tel: ++44(0)1738 449 084

email: info@tayplay.com

Web: www.tayplay.com