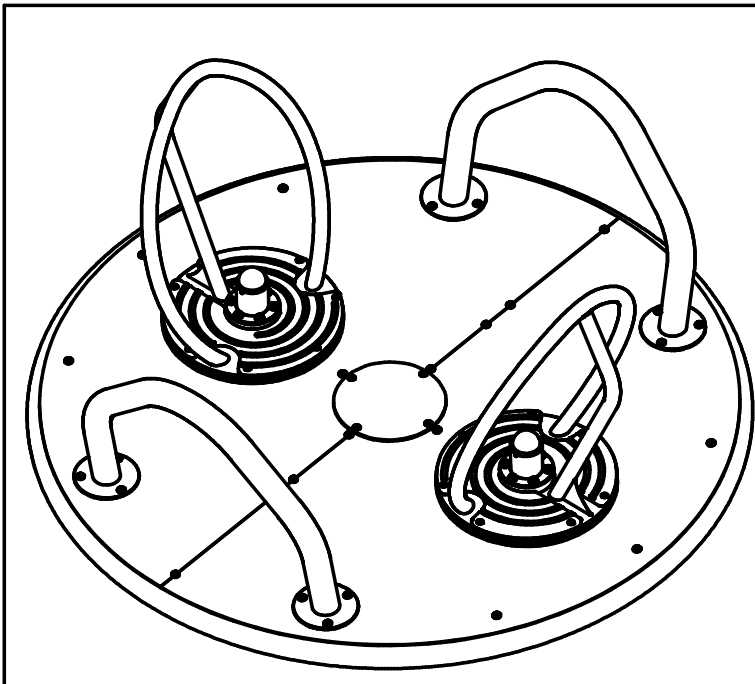


# Rotaplay

## G-Force Roundabout

PROD. CODE	6020-068
SIZE	Dia. 2000 x 1000
AGE RANGE	6 to 16 years
F/ FALL HEIGHT	1000mm
HEAVIEST PART	375 kg
TOTAL WEIGHT	430 kg



### SPECIFICATION

Solid steel components to BS 970 Pt 1  
Steel Nominal Bore Tube (medium) to BS 1387  
Aluminium castings made from LM6M  
19mm thick HD polyethylene 100% recyclable non-toxic and complies with EN 71  
Non-standard fixings are anti-vandal and corrosion resistant  
Welds are from copper-free wire to BS EN 440  
Low lead polyester powder paint to BS 71 Pt 3

### INSTALLATION INSTRUCTIONS

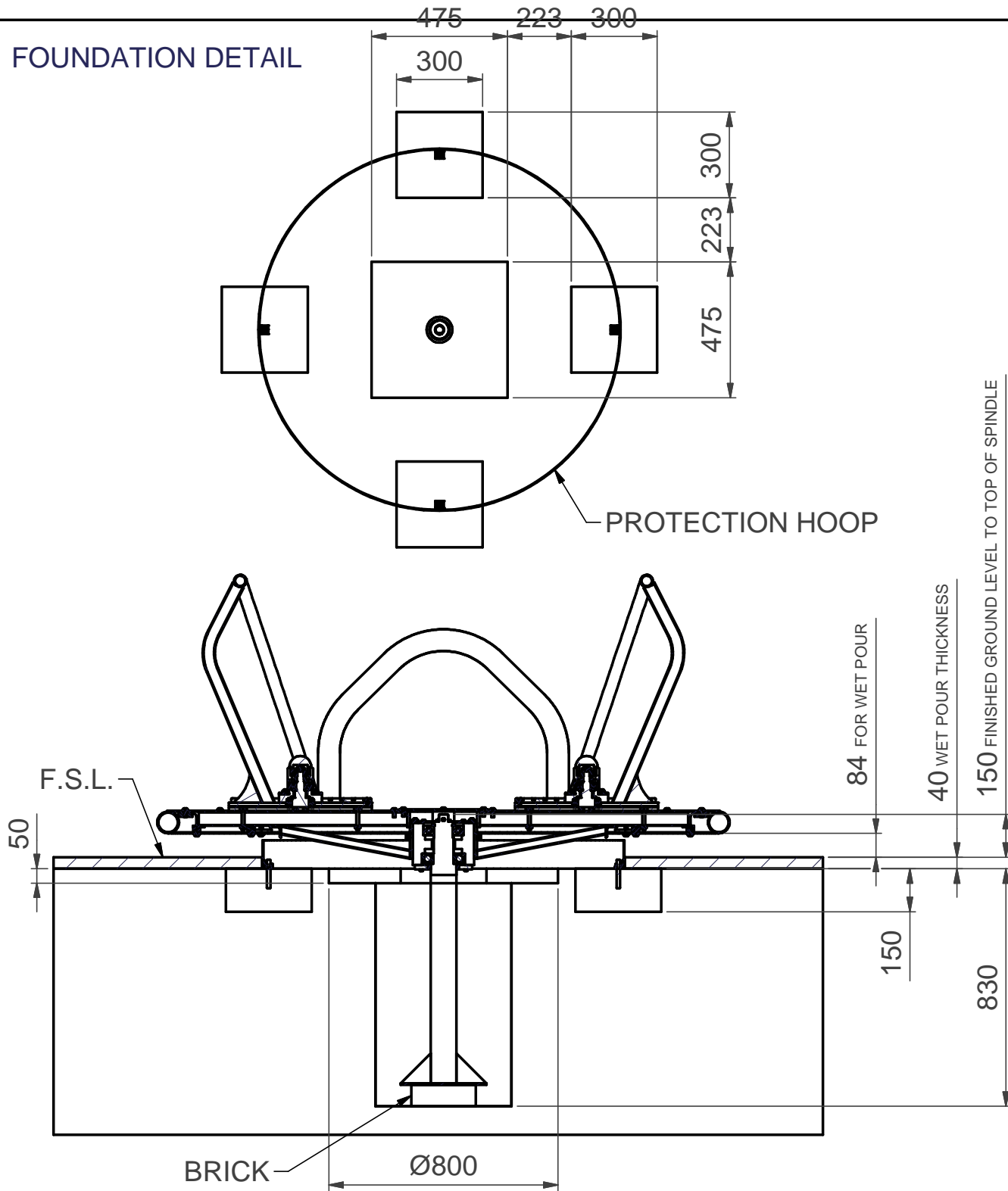
- 1 Read these instructions carefully before commencing with the erection of the unit.
- 2 Do not tighten fastenings until unit is completely installed unless otherwise stated.
- 3 Excavate foundations as shown.
- 4 Place Spindle in foundations ensuring Spindle rests on a brick at height shown and is correctly aligned vertically.
- 5 Secure Protection Hoop.
- 6 Backfill with concrete and allow 96 hours before proceeding.
- 7 Concrete mix to be: 4 parts gravel, 2 parts sand & 1 part cement.
- 8 Remove platform centre cover and bearing housing top cover.
- 9 Lower platform assembly onto the spindle. The spindle should protrude 30mm from the top of the bearing housing when fitted correctly.
- 10 Grease radial bearing prior to fitting. Use Fina Ceran HV or equivalent grease.
- 11 Fit greased radial bearing over the spindle and into the housing.
- 12 Fit retention clip onto spindle.
- 13 Fill bearing housing with grease through grease nipple.
- 14 Refit bearing housing top cover and platform centre cover plate.
- 15 The unit is now ready for use.

**Note:** All protruding screw threads to be peened over to remove sharp edges.  
Lifting aid will be required when installing this piece of equipment.

Note

**Note ENSURE ALL INSTALLATION AIDS ARE REMOVED BEFORE FIRST USE**

# FOUNDATION DETAIL



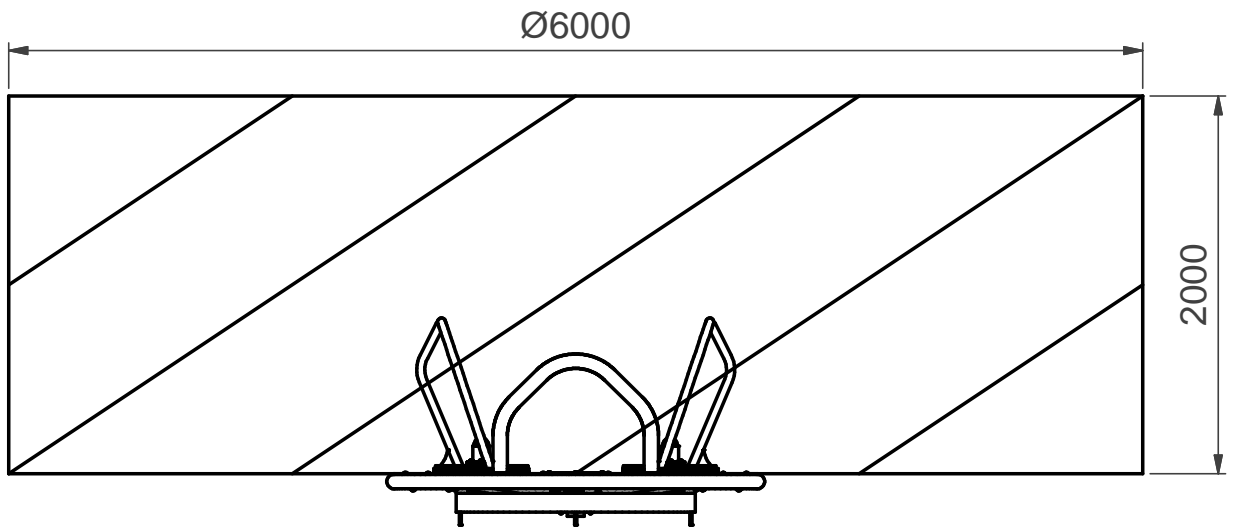
Spindle hole size: 475mm square minimum amount of concrete required - 0.185 cubic metres.

Note:- When laying sand filled carpet as a finished surface, ensure that spindle is set 25mm higher than that stated in spindle installation detail this will bring the underside of finished surface clearance within the 60 - 110mm tolerance as stated in EN1176

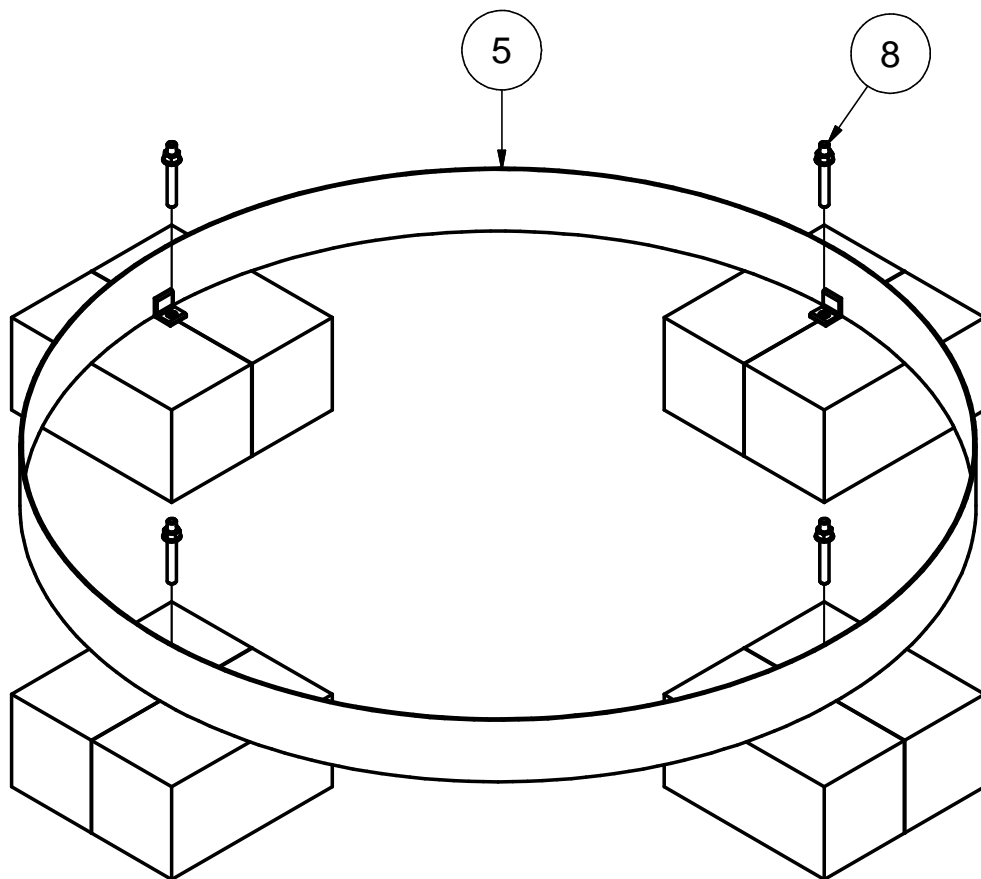
Note: Ground clearance from finished surface level to underside of platform to be between 60mm and 110mm, to be maintained for 300mm towards the spindle. (BS EN 1176)

If there is uneven movement between underside of ring and ground, adjustment can be achieved by slightly loosening off the appropriate strut arm and inserting two M10 grub screws in the strut arm backplate. Adjustment can then be made to achieve an all round even underside to ground clearance.

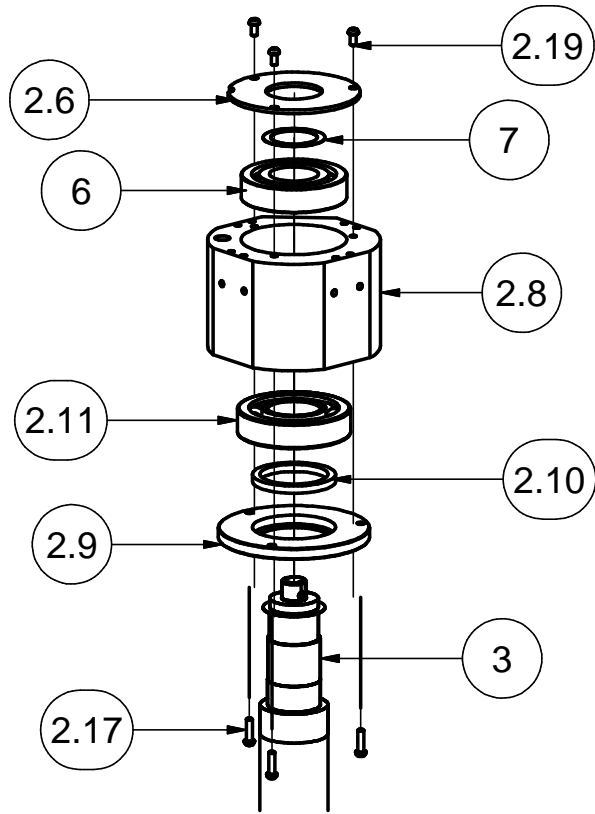
FREE SPACE



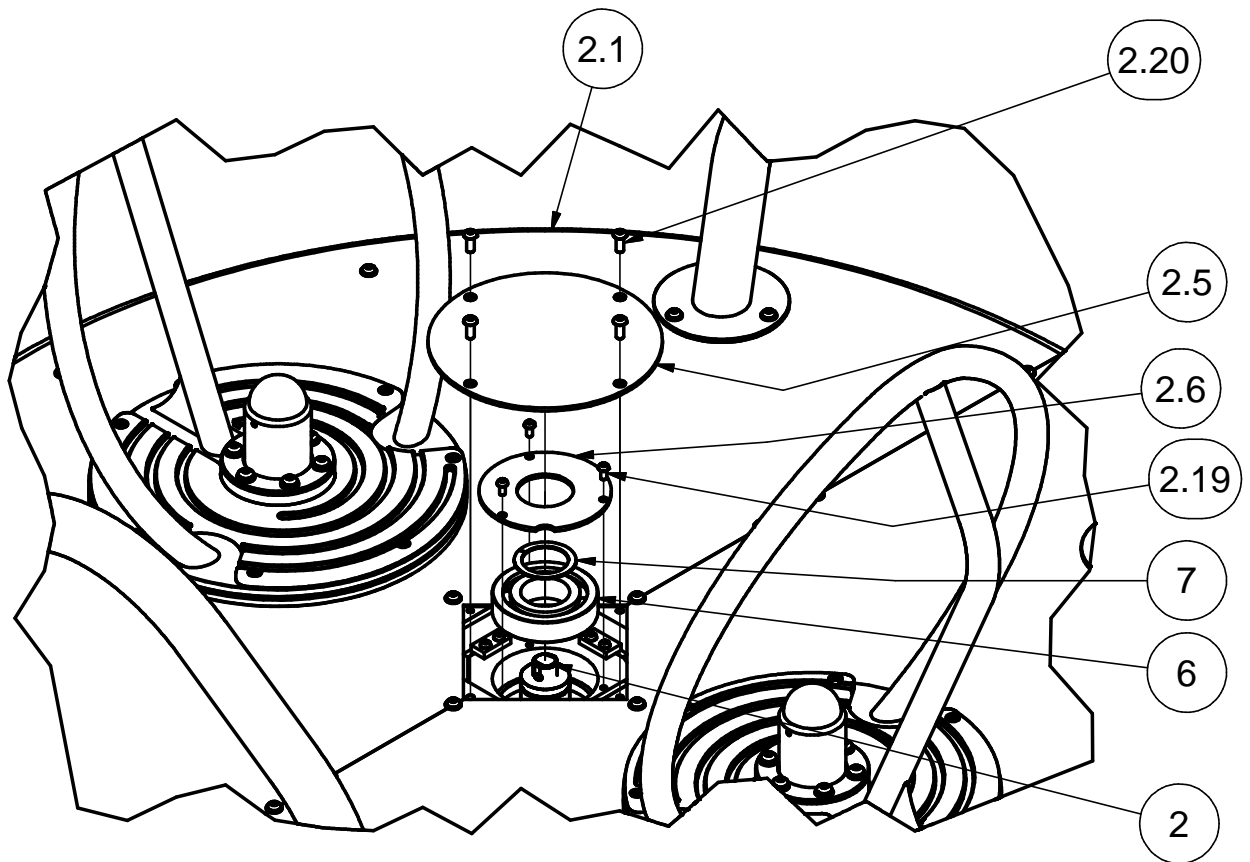
PROTECTION HOOP FIXING



# BEARING HOUSING DETAIL

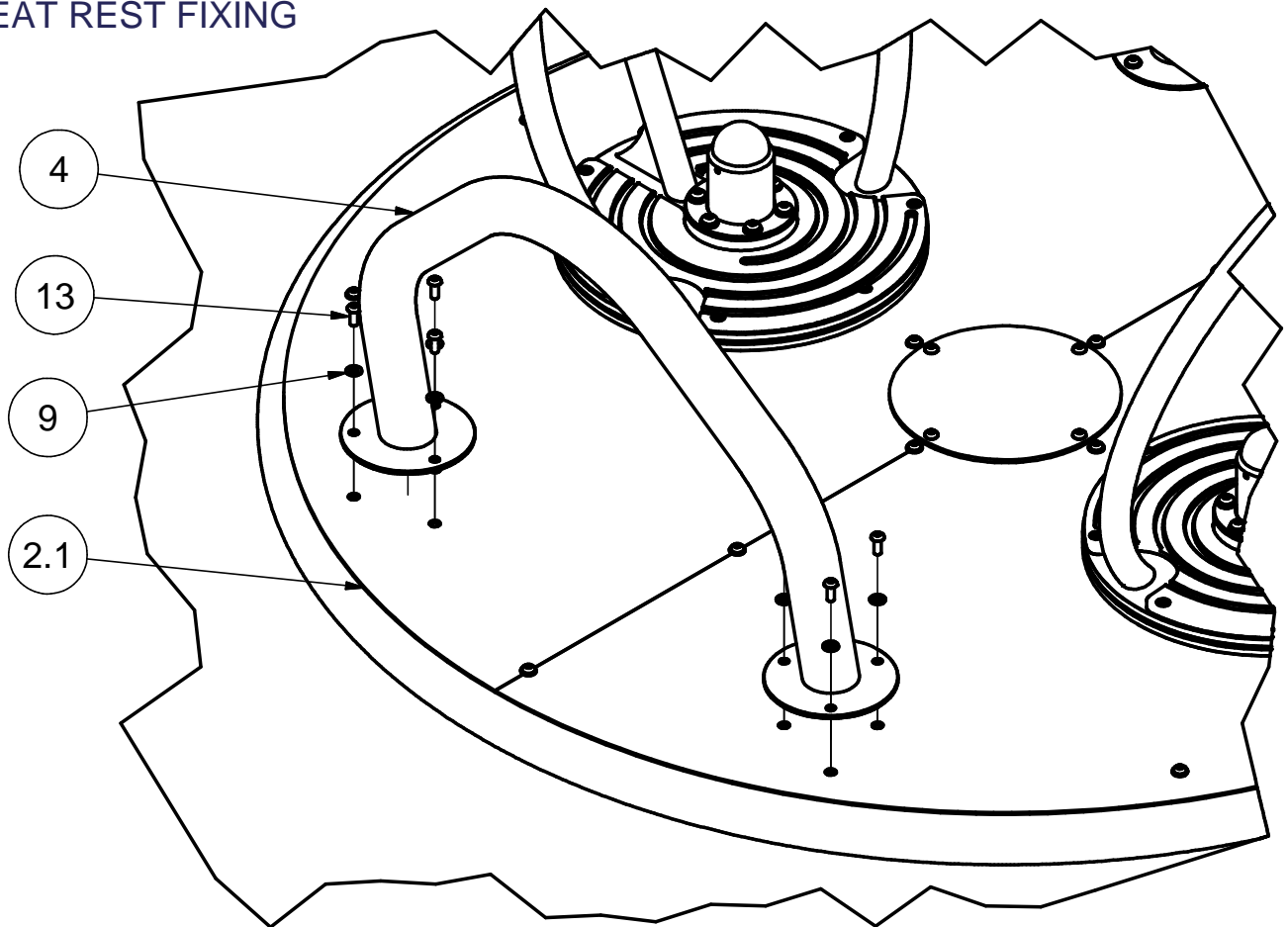


# FIXING DETAIL FOR PLATFORM ONTO SPINDLE

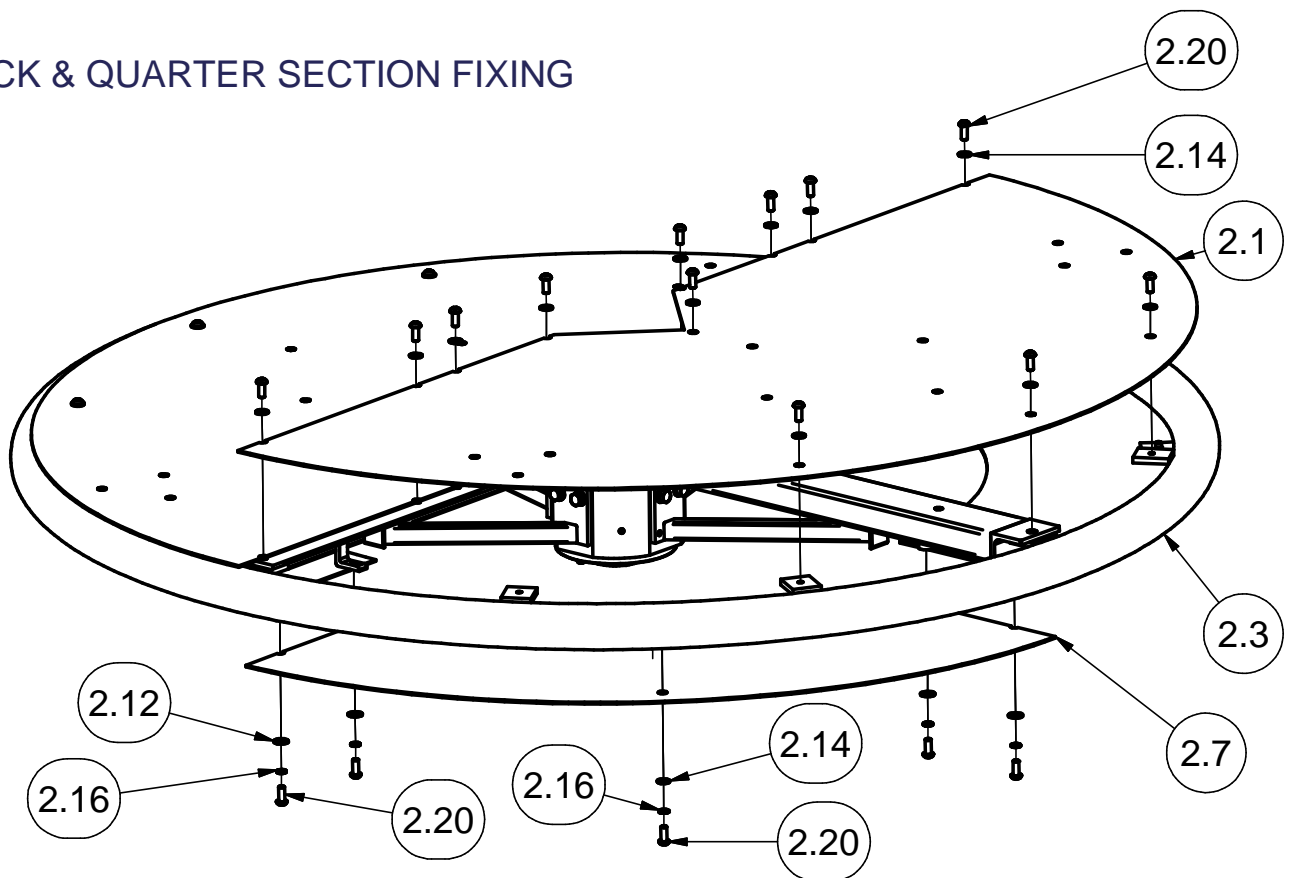


# FIXING DETAILS FOR MAINTENANCE

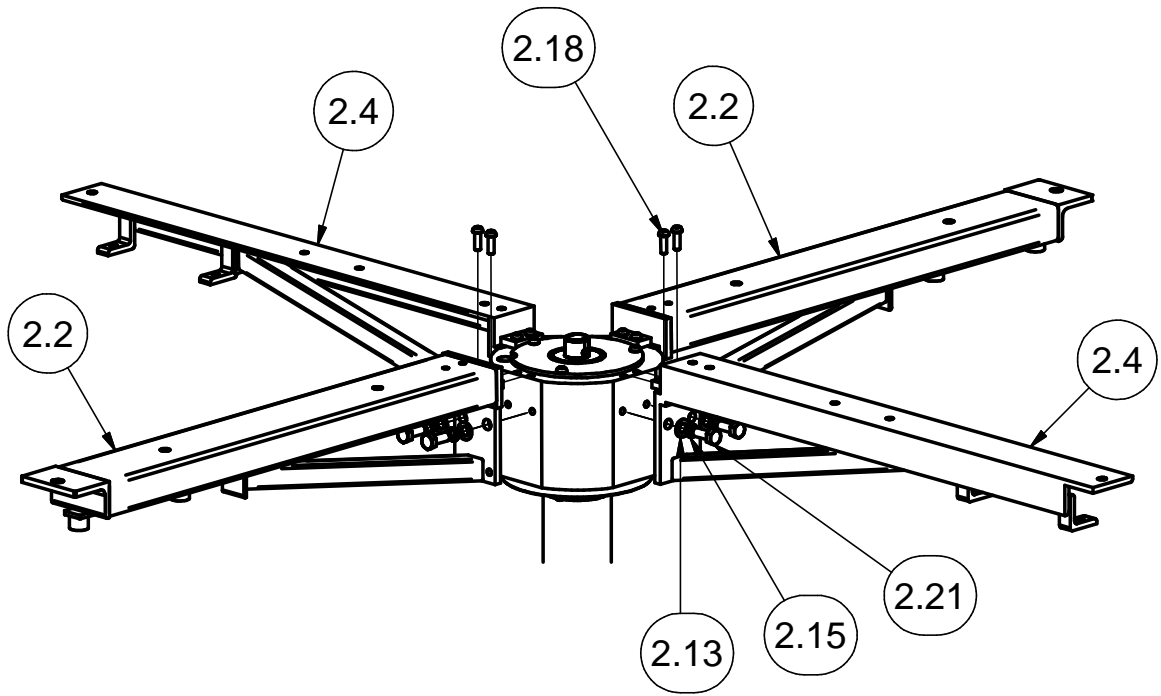
## SEAT REST FIXING



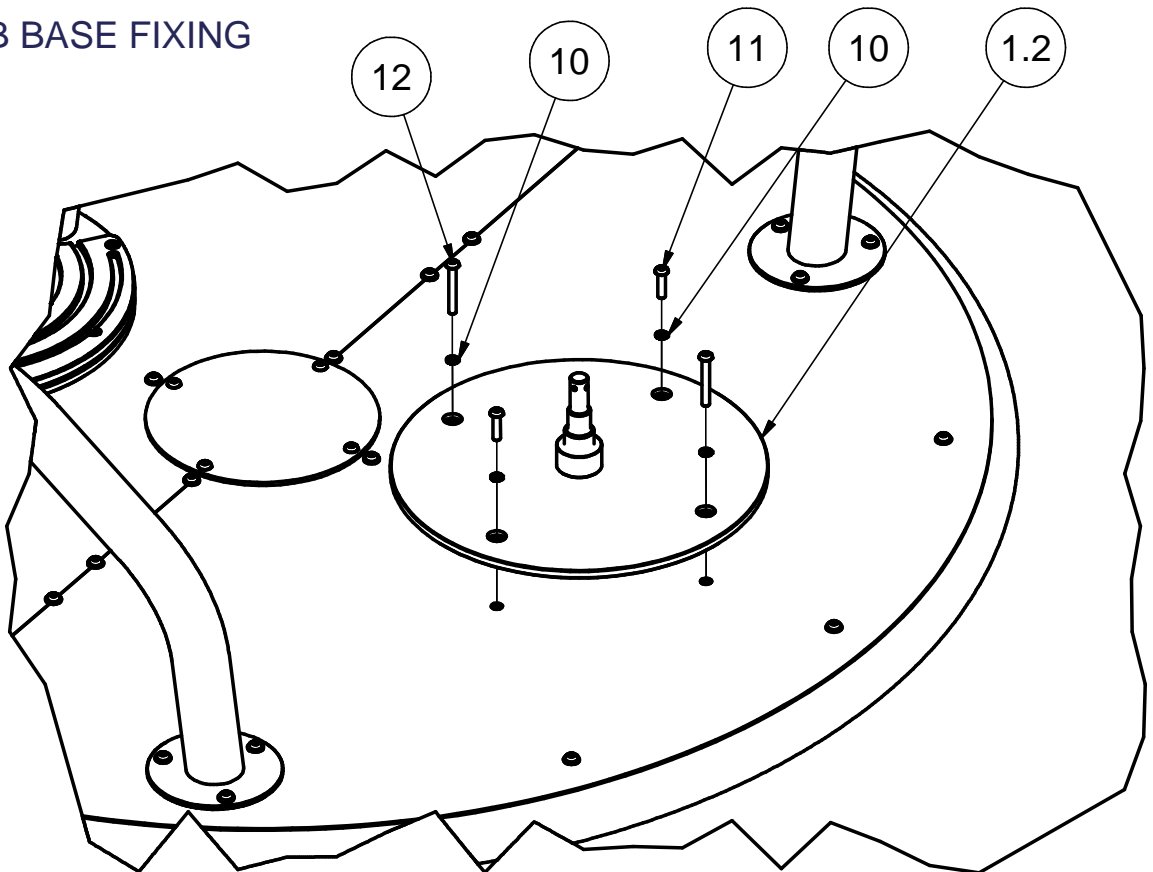
## DECK & QUARTER SECTION FIXING



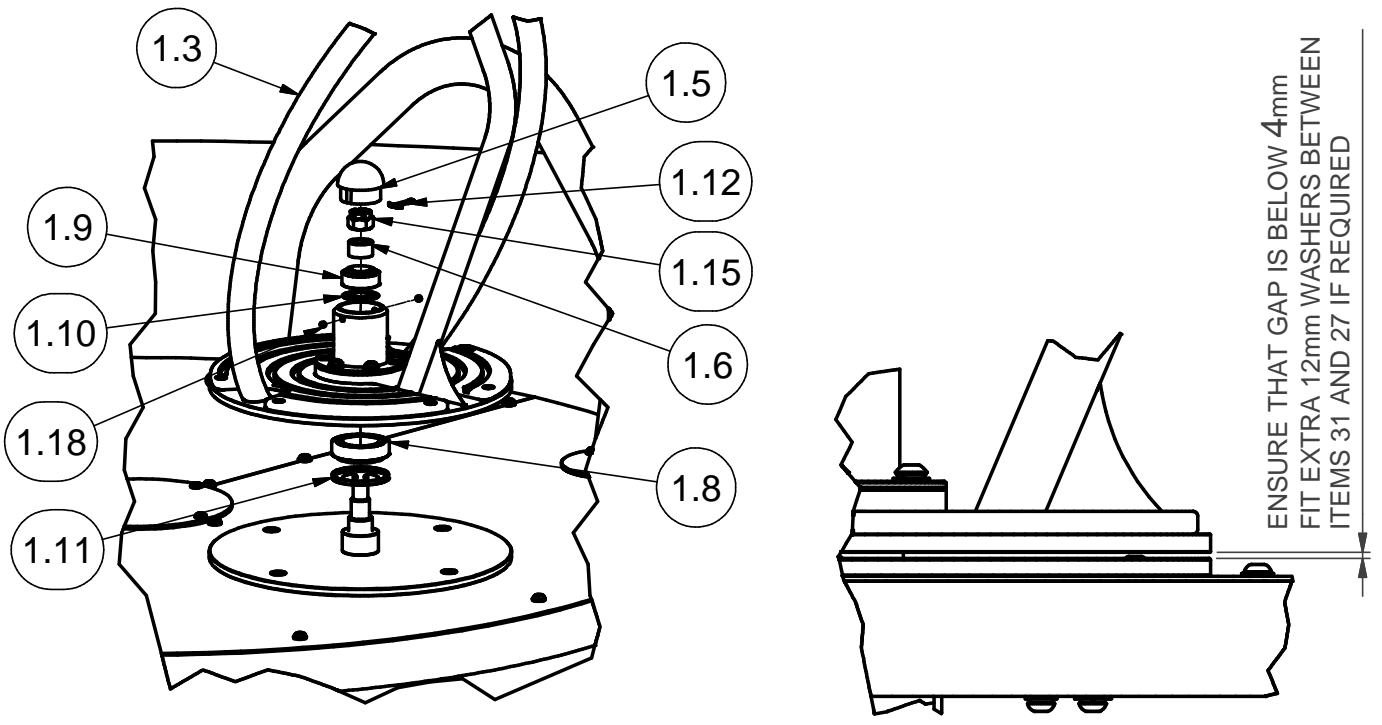
# STRUT FIXING



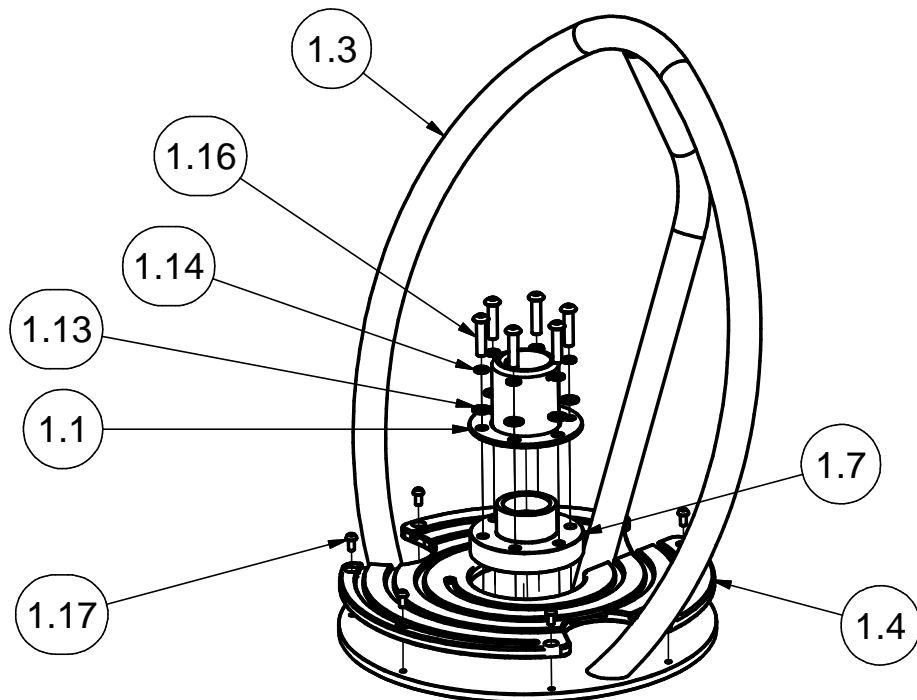
# MINI RAB BASE FIXING



# ARCHED MINI RAB BEARING ARRANGEMENT



# ARCHED MINI RAB CONSTRUCTION



ITEM	QTY	PART NUMBER	DESCRIPTION
1	2	5094-008	ARCHED MINI RAB ASSY
1.1	1	4201-312	BEARING HOUSING COVER ASSY
1.2	1	4201-311	MINI RAB BASE ASSY
1.3	1	4201-306	ARCHED MINI RAB PLATFROM ASSY
1.4	1	3755-329	ARCHED MINI RAB SPIRAL DECK
1.5	1	3711-002	Aluminium End Cap
1.6	1	3032-009	SPACER
1.7	1	3030-223	BOTTOM BEARING HOUSING
1.8	1	2546-010	33012 BEARING
1.9	1	2546-009	33206 BEARING
1.10	1	2541-132	Nilos Ring 33206 JV
1.11	1	2541-126	NILOS RING 33012AV
1.12	1	2221-008	3/16" x 2" Long Cotter Pin
1.13	6	2215-509	M12 Plain Washer
1.14	6	2212-204	M12 Spring Washer
1.15	1	2193-057	M24 Castle Nut
1.16	6	2176-179	M12 x 50 Pent Button Head
1.17	7	2176-151	M8 x 16 Pent Button Head
1.18	2	2171-110	M8x8 Grub Screw
2	1	5094-007	PLATFORM ASSY
2.1	2	4201-303	DECK ASSEMBLY
2.2	2	4201-302	RHS STRUT ASSEMBLY
2.3	1	4082-016	SPIROWHIRL RING ASSY
2.4	2	4031-039	SPIRO/HONEYCOMB WHIRL STRUT
2.5	1	3292-054	COVER PLATE
2.6	1	3200-456	TOP BEARING COVER
2.7	4	3200-224	HCW/SPIRO QUARTER SECTION
2.8	1	3032-019	BEARING HOUSING
2.9	1	3030-163	BOTTOM BEARING COVER
2.10	1	2900-042	OIL SEAL
2.11	1	2542-006	THRUST BEARING
2.12	8	2215-526	M10 Washer (Dia 24mm x 2mm Thk)
2.13	8	2215-509	M12 Plain Washer
2.14	20	2215-508	M10 Washer
2.15	8	2212-204	M12 Spring Washer
2.16	12	2212-203	M10 Spring Washer
2.17	3	2176-153	M8 x 30 Pent Button Head
2.18	8	2176-152	M8 x 25 Pent Button Head
2.19	3	2176-151	M8 x 16 Pent Button Head
2.20	32	2176-126	M10 x 25 Pent Button Head
2.21	8	2175-135	M12 x 30 LG HEX HD SCREW
3	1	5091-018	COMMON SPINDLE ASSEMBLY
4	2	4201-301	SEAT REST ASSEMBLY
5	1	4200-132	HCW/SPIRO PROTECTION HOOP
6	1	2541-113	RADIAL BALL BEARING
7	1	2441-005	RETENTION CLIP (Ref. DNS-65)
8	4	2341-028	M12 TRUBOLT
9	12	2215-508	M10 Washer
10	8	2212-203	M10 Spring Washer
11	4	2176-133	M10 x 40 Pent Button Head
12	4	2176-130	M10 x 75 Pent Button Head
13	12	2176-126	M10 x 25 Pent Button Head

COMPILED SB	REV	0	1	2	3	4	5	6		
	ECN	1567	minor	minor	minor	1720	minor	Minor		
DATE: 17/10/08	SIG.	SB	SB	SB	DB	DB	AB	MC		
	DATE:	17/10/08	12/01/09	02/09/09	11/09/09	30/04/15	08/07/16	14/11/16		

6020-068

Page 8 of 8

All spare parts are available from Wicksteed Playscapes on request. For maintenance instructions see separate sheet.



# DESPATCH LIST

Product: Rotaplay G-Force RAB

Code No: 6020-068

Date of Issue: 17/10/08

Order No: .....

Issue: A

Item	Unit Qty	Description	Part No.	Checked
1	1	PLATFORM ASSY *	5094-007	
2	2	ARCHED MINI RAB ASSY *	5094-008	
3	1	COMMON SPINDLE ASSEMBLY	5091-018	
4	2	SEAT REST ASSEMBLY	4201-301	
5	1	HCW/SPIRO PROTECTION HOOP	4200-132	
6	1	FIXINGS PACK		
ITEMS MARKED * ARE ASSEMBLED PRIOR TO DESPATCH				
ITEMS MARKED* FITTED BEFORE DESPATCH:				

Total No. of Items

Picked By: .....

Checked By: .....

COMPILED BY: SB	REV	0				
	ECN No.	1567				
DATE: 17/10/08	DATE	17/10/08				
	SIGN	SB				

# FIXINGS LIST

Sheet 1 of 1

Product: Rotaplay G-Force RAB

Code No: 6020-068

Date of Issue: 17/10/08

Order No: .....

Issue: A

Item	Unit Qty	Description	Part No.	Checked
1	4	Trubolt - M12	2341-028	
2	1	Radial Ball Bearing (Ref FAG 6313 2RS)	2541-113	
3	1	Retention Clip (Ref DNS-65)	2441-005	
4	12	M10 Washer *	2215-508	
5	8	M10 Spring Washer *	2212-203	
6	8	M10 x 25 Hex Head Bolt *	2185-032	
7	12	M10 x 25 Pent Button Head *	2176-126	
8	1	Pent key - M10/M12	2372-008	
9	1	Pent key - M8	2372-003	
10	1	High Temp. Grease - 400g Tube	2581-003	
		ITEMS MARKED * ARE ASSEMBLED PRIOR TO DESPATCH		

Total No. of Items

Picked By: .....

Checked By: .....

COMPILED	REV	0					
BY: SB	ECN No.	1567					
DATE: 17/10/08	DATE	17/10/08					
	SIGN	SB					