

DELIVERY LIST		
Part No.	Description	Qty
4200-587	Platform Assembly c/w Seats & Handholds	1
5091-018	Spindle Assembly	1
4200-132	Protection Hoop	1
3031-040	Retention Ring	1
	Fixings Pack	1

ROTAPLAY	
SPIRO-WHIRL	
PROD CODE:	6020-053
SIZE:	2000 DIA x 930
AGE RANGE:	5 – 12 YEARS
FREE FALL HEIGHT:	212 mm
FREE SPACE:	2000 mm
HEAD CLEARANCE:	2000 (FROM DECK SURFACE)
WEIGHT OF HEAVIEST PART	330 Kg
OVERALL WEIGHT OF UNIT	365 Kg

SPECIFICATION

Solid steel components made from steel to BS 9070 Part 1 (1983).

Floor panels made from steel Durbar Chequer Plate. Standard fastenings are plated and made to one of the following specifications:- BS 3692 (1967); BS 4190 (1967);

Non standard fastenings are plated for weather protection and designed to deter vandals.

Metal parts coated with low lead polyester powder paint to BS EN71 part 3 (1995).

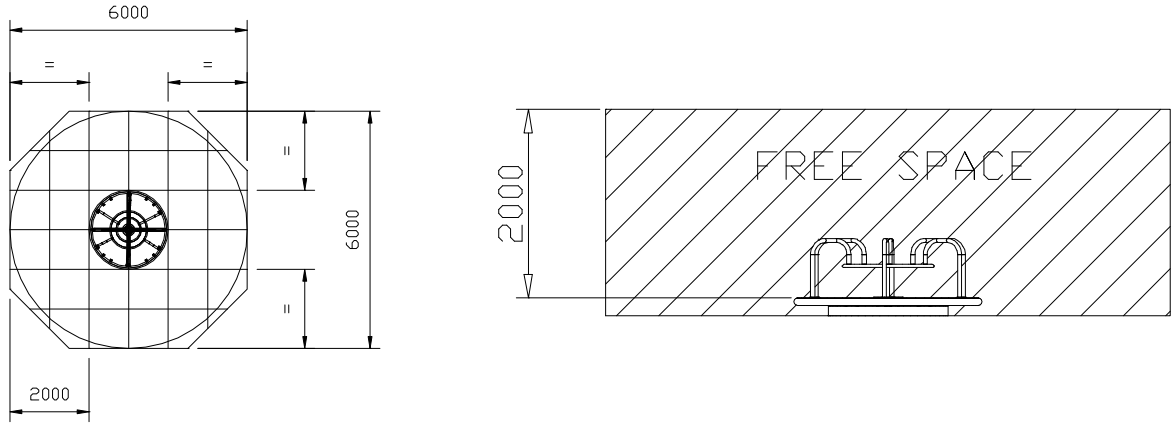
INSTALLATION INSTRUCTIONS

- 1 Read these instructions carefully before commencing with the erection of the unit.
- 2 Do not tighten fastenings until unit is completely installed unless otherwise stated.
- 3 Excavate foundations as shown.
- 4 Place Spindle (G) in foundations ensuring Spindle rests on a brick at height shown and is correctly aligned vertically.
- 5 Secure Protection Hoop (R).
- 6 Backfill with concrete and allow 96 hours before proceeding.
- 7 Concrete mix to be: 4 parts gravel, 2 parts sand & 1 part cement.
- 8 Remove platform centre cover and bearing housing top cover.
- 9 Lower platform assembly onto the spindle. The spindle should protrude 30mm from the top of the bearing housing when fitted correctly.
- 10 Grease thrust (bottom) bearing prior to fitting. Use Fina Ceran HV or equivalent grease.
- 11 Fit greased thrust bearing (L) over the spindle and into the housing.
- 13 Fit retention clip onto spindle.
- 14 Fill bearing housing with grease through grease nipple.
- 15 Refit bearing housing top cover and platform centre cover plate.

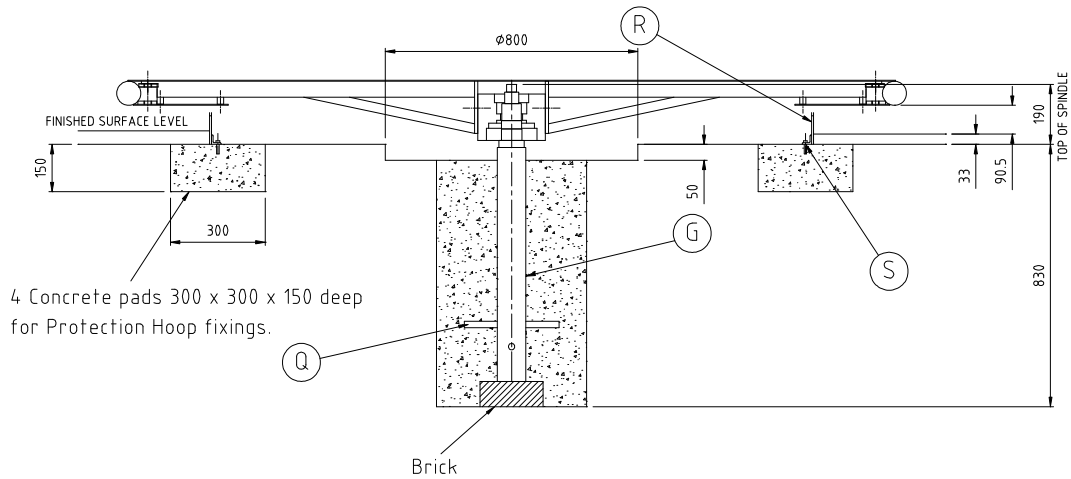
Note: All protruding screw threads to be peened over to remove sharp edges.
Lifting aid will be required when installing this



SURFACING & FREE SPACE DETAIL



FOUNDATION DETAIL



Note:- When laying sand filled carpet as a finished surface, ensure that spindle is set 25mm higher than that stated in spindle installation detail this will bring the underside of finished surface clearance within the 60 - 110mm tolerance as stated in EN1176

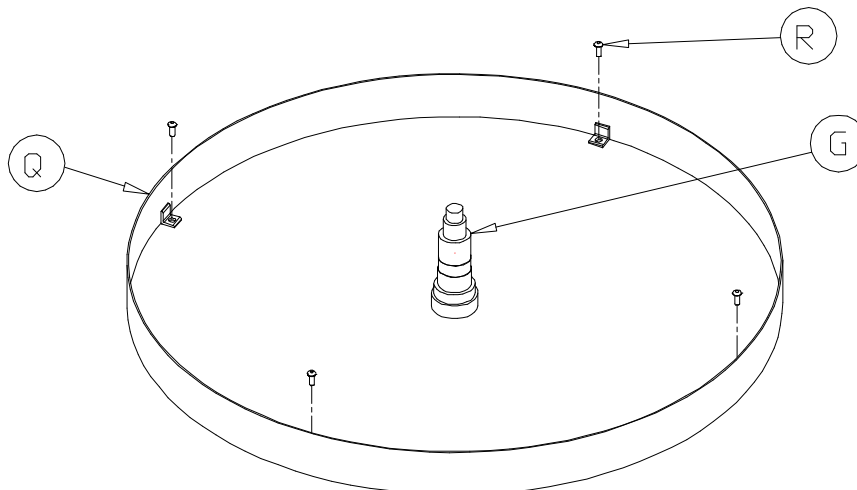
Note: If any water traps are produced in foundations, drainage holes must be provided.

Spindle hole size: 475mm square minimum
 Amount of concrete required – 0.185 cubic metres
 Note: Ground clearance from finished surface level to underside of platform to be between 60mm and 110mm, to be maintained for 300mm towards the spindle. (BS EN 1176)

PROTECTION HOOP DETAIL

Position Protection Hoop centrally around spindle and secure with M12 Trubolt

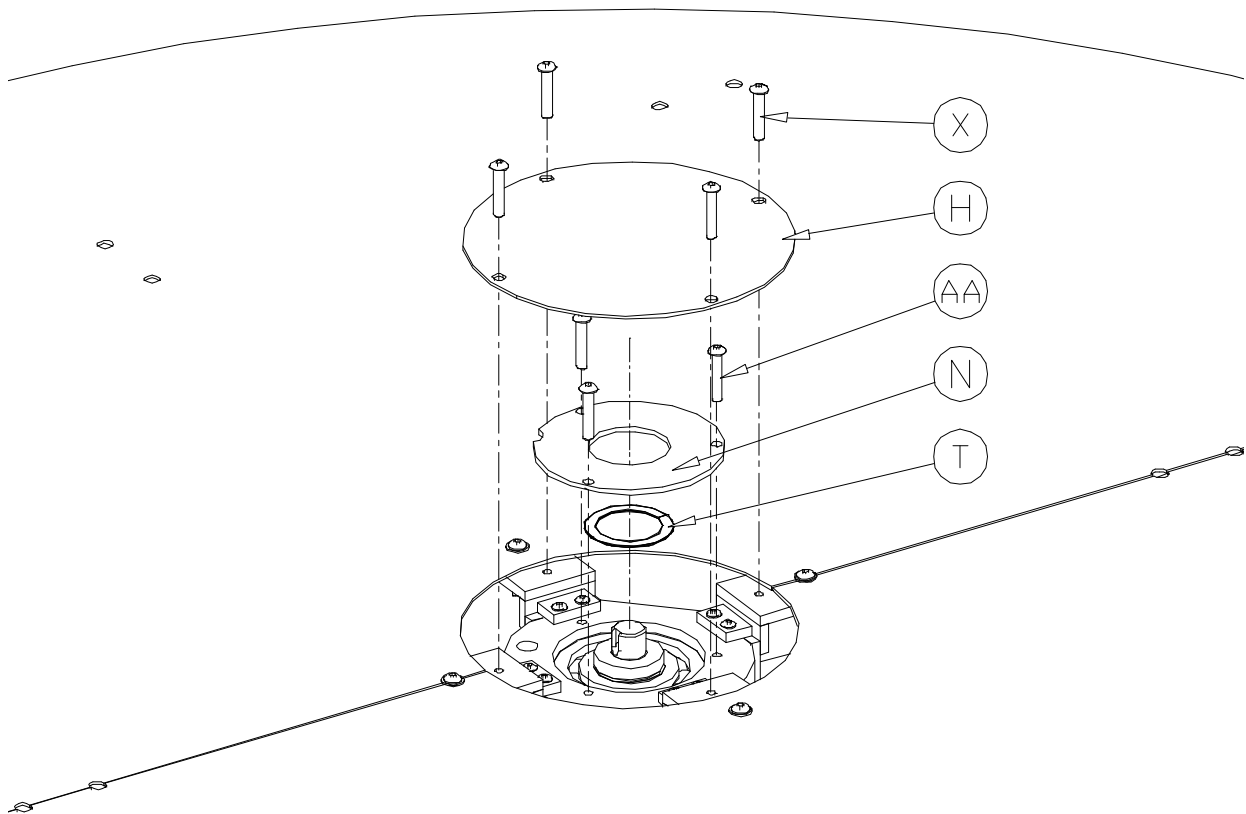
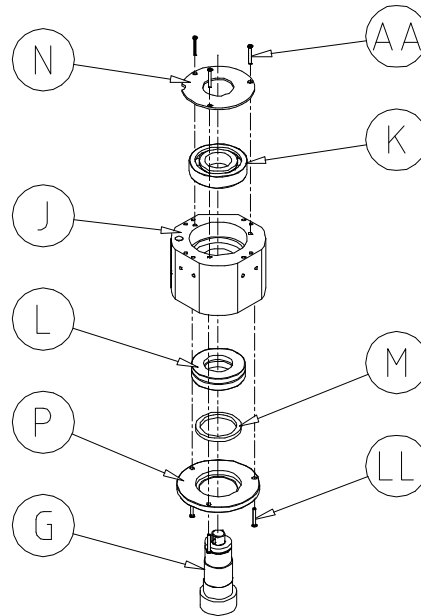
If there is uneven movement between underside of ring and ground, adjustment can be achieved by slightly loosening off the appropriate strut arm and inserting two M10 grub screws in the strut arm backplate. Adjustment can then be made to achieve an all round even underside to ground clearance.



BEARING HOUSING DETAIL

Fit Platform Assembly onto Spindle as shown in Foundation Detail.
Remove Top Bearing Cover and fit Radial Ball Bearing in position on Spindle and in Housing, ensuring that pressure is applied evenly to inner and outer races.

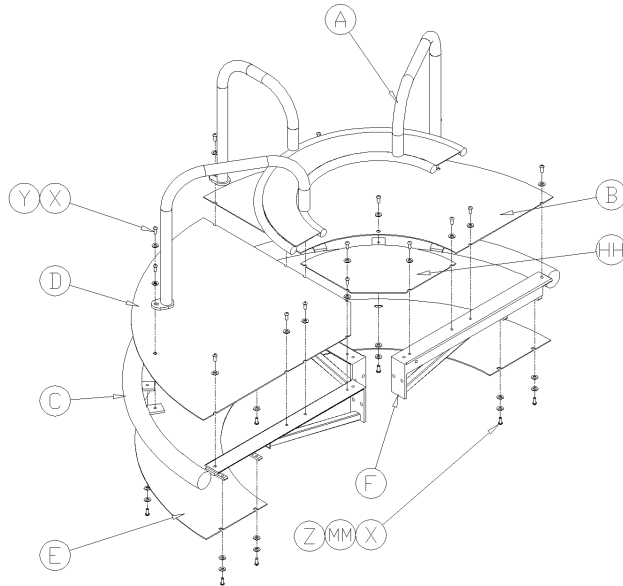
Oil seal is fitted letter side upwards, to



FIXING DETAILS FOR TOP COVER AND RETENTION CLIP

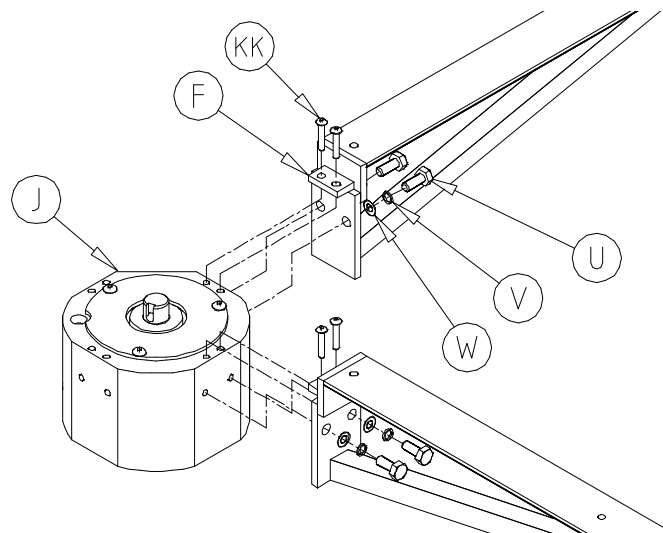
Fit Retention Clip to Spindle. Re-fit Bearing Top Cover using M8 x 16 Button Head Screws and fit Cover Plate to Struts using M10 x 25 Button Head Screws.

FIXING DETAILS FOR MAINTENANCE



FIXING DETAILS FOR HANDRAILS, DECK & QUARTER SECTION


Fit Quarter Section to Strut and Outer Ring using M10 x 25 Pentagon Button Head Screws and M10 x Dia 24mm Washer & Spring Washer.
Fit Frame Sections To Deck Quarter Sections/Maintenance Section and Outer Ring Using M10 x 25 Pentagon Button Head Screws and 10mm Washer.



FIXING DETAILS FOR STRUT TO BEARING HOUSING

Fit Strut to Bearing Housing using M12 x 30 Hex Head Bolts and M8 x 25 Button Head Screws, 12mm Spring Washers and 12mm Washers.

REF	QTY	DESCRIPTION	PART No
A	1	Frame Section	4200-585
B	1	1/4 Deck Section With Maintenance Cutout	3200-441
C	1	Outer Ring	4082-016
D	1	1/4 Deck Section	3200-442
E	4	Quarter Section	3200-224
F	4	Strut Arm	4031-039
G	1	Spindle Assembly	5091-018
H	1	Cover Plate	3753-051
J	1	Bearing Housing	3032-019
K	1	Radial Ball Bearing (Ref. FAG 6313 2RS)	2541-113
L	1	Thrust Bearing (Ref. FAG 73148 TVP)	2542-006
M	1	Oil Seal (Ref. TC 90 110 8)	2900-042
N	1	Top Bearing Cover	3200-456
P	1	Bottom Bearing Cover	3030-163
R	1	Protection Hoop	4200-132
S	4	M12 Trubolt	2341-028
T	1	Retention Clip (Ref. DNS-65)	2441-005
U	8	M12 x 30 Hex Head Screw	2175-135
V	8	12mm Spring Washer	2212-004
W	8	12mm Washer	2215-509
X	39	M10 x 25 Pentagon Button Head Screw	2176-126
Y	39	10mm Washer	2215-508
Z	12	10mm Spring Washer	2212-003
AA	3	M8 x 16 Button Head Screw	2176-151
CC	1	High Temp Grease (400g Tube)	2581-003
HH	1	Maintenance Section	4200-338
JJ	1	1/2 Deck Section	3200-377
KK	8	M8 x 25 Button Head Screw	2176-152
LL	3	M8 x 30 Button Head Screw	2176-153
MM	8	M10 x Dia.24mm x 2mm Thk Washer	2215-526

	COMPILED BY:	APPROVED BY:	REV	NEW	1	2	3	4	5
	P Kearney		ECN	1411	minor	minor	minor	1470	minor
	DATE:	DATE:	SIG.	PK	PK	SB	SB	SB	PK
	9/9/02		DATE.	9/9/02	05/03/03	26/03/03	27/10/03	18/05/04	9/5/05
			6	7	8	9	10	11	
			1494	minor	Minor	Minor	Minor	Minor	
			SB	SB	TW	TW	PG	MC	
			12/07/05	06/06/06	01/08/06	23/05/07	8/7/16	14/11/16	

For maintenance instructions see separate sheet.

DESPATCH LIST

Product: SPIRO-WHIRL Code No. 6020-053 Date of Issue: _____

Order No. _____ Issue: C _____

Item	Unit Qty	Description	Part No.
1	1	Platform Assembly c/w Handrail, Seats & Handhold	4200-587
2	1	Common Spindle Assembly	5091-018
3	1	Protection Hoop	4200-132
4	1	Fixings Pack	

Total No. of Items

Picked By: _____ Checked By: _____

COMPILED BY: PK	REV	NEW	1	2			
	ECN No.		1470	Minor			
DATE: 24/05/02	DATE		12/05/04	22/02/06			
	SIGN	PK	SB	TW			

FIXINGS LIST

Sheet 1 of 1

Product: SPIRO-WHIRL

Code No. 6020-053

Date of Issue: _____

Order No. _____

Issue: D

Item	Unit Qty	Description	Part No.
1	4	M12 Trubolt	2341-028
2	1	Radial Ball Bearing (Ref FAG 6313 2RS)	2541-113
3	1	Retention Clip (Ref DNS-65)	2441-005
4	1	Pent key - M10/M12	2372-008
5	1	Pent key - M8	2372-003
6	1	High Temp. Grease - 400g Tube	2581-003

Total No. of Items

Picked By: _____

Checked By: _____

COMPILED BY: PK	REV	NEW	1	2	3		
	ECN No.		minor	1470	minor		
	DATE		26/03/03	12/05/04	01/08/06		
	SIGN	PK	SB	SB	TW		