

DELIVERY LIST		
Part No.	Description	Qty
-	Turnstile – Fully Assembled	1

ROTAPLAY	
TURNSTILE	
PROD CODE:	6020-046
SIZE:	Dia. 375mm x 900mm
AGE RANGE:	2 – 5 YEARS
FREE FALL HEIGHT:	125 mm
FALLING SPACE:	1500 mm
WEIGHT OF HEAVIEST PART:	15 Kg
OVERALL WEIGHT OF UNIT:	33 Kg

SPECIFICATION

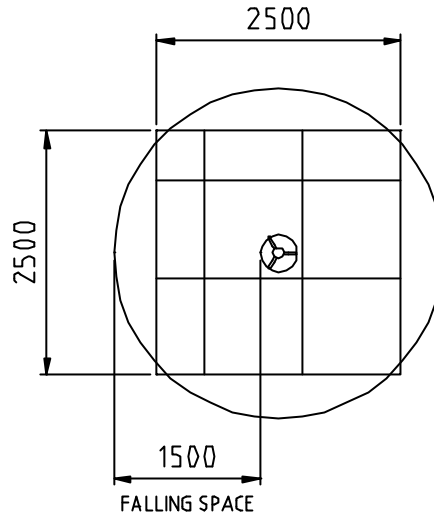
Solid steel components made from steel to BS 9070 Part 1 (1983).
 Nominal Bore Tube (medium) to BS 1387.
 3mm chequer plate to BS EN 1449 Part 1.
 Non-standard fastenings are plated for weather protection and designed to deter vandals.

Welds are from copper free wire diameter 1mm to BS EN 440 (1995).
 Metal parts coated with low lead polyester paint to BS EN 71 part 3 (1995).

INSTALLATION INSTRUCTIONS

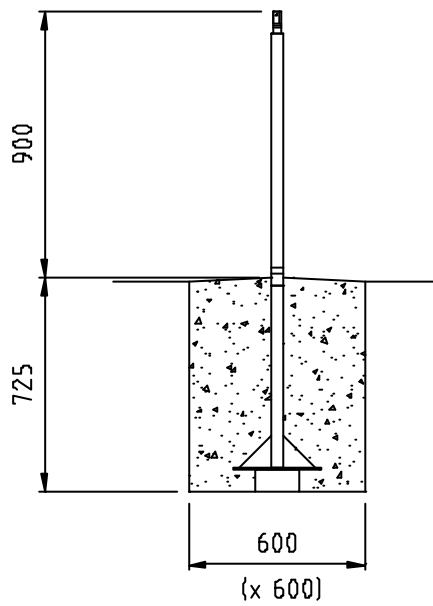
- 1 Read the installation instructions thoroughly before commencing the erection of the unit.
 - 2 Excavate foundations in accordance with details shown in foundation plan.
 - 3 If installing turnstile as a complete unit place spindle in prepared foundations ensuring it is plumb and square. Refer to foundation detail.
 - 4 Prop spindle and backfill foundations with 0.26 cubic metres of concrete. Allow 48 hours drying time before unit is ready for use.
 - 5 If installing Turnstile with parts supplied individually, or maintaining, place spindle in prepared foundations, ensuring it is at the correct height and is plumb and square. Refer to foundation detail.
 - 6 Prop spindle and backfill foundations with 0.26 cubic metres of concrete. Allow 48 hours drying time before continuing with installation.
 - 7 Locate bottom bearing inner race onto bearing diameter on spindle facing upwards.
 - 8 Locate outer races of top and bottom bearings into
 - 9 Liberally pack bottom bearing (H) with grease and fit column tube assembly over spindle to locate on bottom bearing (H).
 - 10 Locate top bearing (G) outer race in top bearing housing of column tube assembly (A). Fit top bearing inner race over spindle and align with outer race. Pack top bearing (G) liberally with Fina Ceran HV, or equivalent grease.
 - 11 Place spacer (C) over spindle (D). Tighten up assembly until there is no movement between the bearings using one M24 castle nut (L), secure with cotter pin. Take care to make sure that the top and bottom bearings are correctly aligned and are not over tightened.
 - 12 Fit top cap (B) to top bearing housing using three M8 x 25mm Button Head Screws (K).
 - 13 Fit two grease nipples and charge unit with grease.
- Note: All protruding screw threads to be peened over to remove sharp edges.
 Lifting aid will be required when installing this piece

SURFACING & FALLING SPACE DETAIL



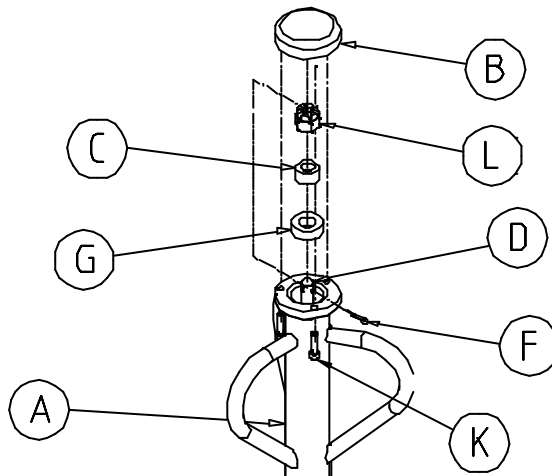
FOUNDATION DETAIL

(Care must be taken under abnormal conditions)

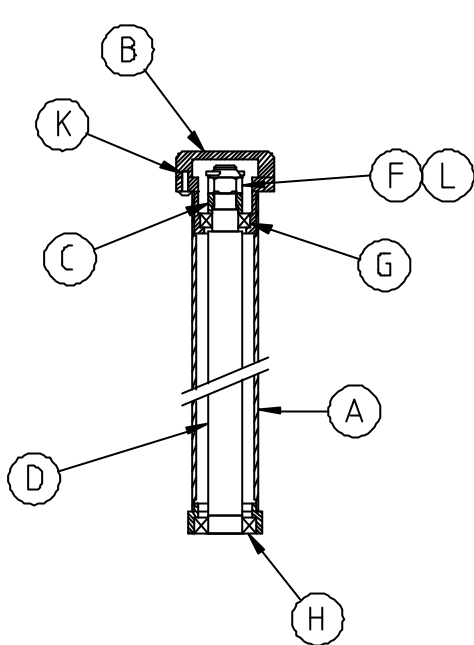


Note:- Finished dimension from surface level to underside of platform to be between 60mm and 110mm (EN1176-5)

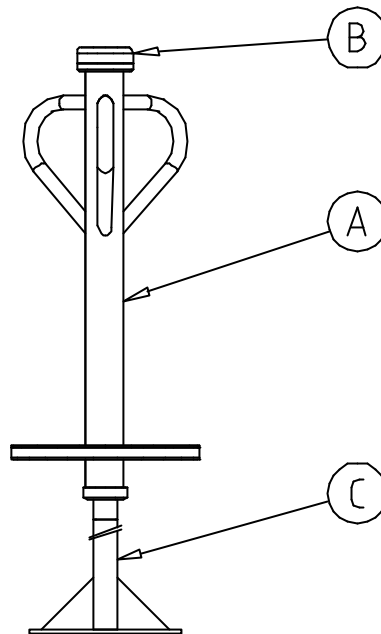
FIXING DETAILS FOR MAINTENANCE



Note:- With Bottom Bearing fitted onto spindle, position Column Assembly over spindle. Fit Top Bearing onto spindle and Column Assembly, then place spacer over spindle and tighten Castle Nut down so that there is no movement between bearings. Fit Cotter Pin and finally secure Top Cap using M8 x 25 Lg Pentagon Button Head Screws.




SPINDLE ASSEMBLY



COLUMN ASSEMBLY

REF	QTY	DESCRIPTION	PART No
A	1	Column Tube Assembly	5091-008
B	1	Top Cap	3032-571
C	1	Spacer	3032-009
D	1	Spindle Assembly	5091-020
F	1	3/16" x 2" Long Cotter Pin	2221-008
G	1	Top Bearing (SKF 32006 30x55x17 Taper Roller Brg)	2546-004
H	1	Bottom Bearing (SKF 32008 40x68x19 Taper Rolling Brg)	2546-003
J	2	Grease Nipples – 1/4" Whit	2691-003
K	3	M8 x 25 Pent Button Head Screw	2176-152
L	1	M24 Castle Nut	2193-057
M	2	M8 Pentagon Key	2372-003

For maintenance instructions see separate sheet.

	COMPILED BY:	APPROVED BY:	REV	1	2	3	4	5
	NLG	VS	ECN	335	MAR 71	1316	minor	minor
	DATE:	DATE:	SIG.	NLG	PG	PG	PG	MH
	04/05/89	10/05/88	DATE.	4/5/89	08/01/98	24/06/99	22/03/01	26/04/02
				6	7	8		
			minor	minor	1494			
			SB	PG	SB			
			01/05/04	10/02/05	13/07/05			

DESPATCH LIST

Product: Turnstile Date of Issue: 27/1/98
Code No. 6020-046 Issue: G

Item	Unit Qty	Description	Part No.
1	1	Main Column Assembly	5091-008 *
2	1	Spindle Assembly	5091-020 *
3	1	Top Cap	3032-571 *
4	1	Spacer	3032-009 *
5	1	Fixings Pack	
		All items marked * to be assembled prior to despatch	

Total No. of Items

Picked By: _____ Checked By: _____

COMPILED BY: KMT	REV	4 (re-written)	5	6	7	8	
	ECN No.	MAR 071	1316	minor	minor	1494	
	DATE	9/1/98	2/3/99	29/6/01	10/2/04	14/07/05	
	DATE: 09/01/1998	SIGN	KMT	PG	PG	PG	SB

